



**Very Fast and Very Simple
FPGA Configuration Solution**

CleverACE Module

이 모듈은 FPGA Configuration 을 보다 쉽고 빠르게 사용할 수 있도록 구성된 모듈로서 기존 방식을 이용하여 로딩 하는 것보다 속도를 혁신적으로 향상시켰으며 편리한 사용자 인터페이스를 제공하여 제품개발 시 쾌적한 환경에서의 디버깅이 가능하며 개발 기간을 획기적으로 단축할 수 있습니다.

앞선 기술력을 바탕으로 Cleverlogic 에서 개발한 CleverACE를 경험해보세요.



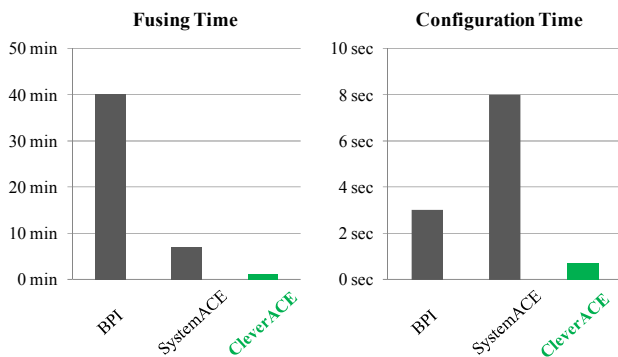
CleverACE Module

(Clever Advanced Configuration Environment Module)

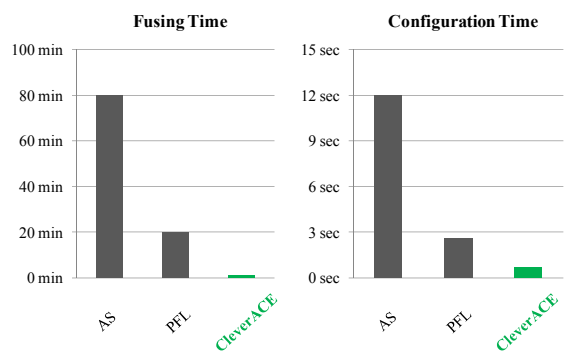
Key Features & Benefits

- Very Simple and Easy GUI (Support Windows XP / 7)
- Up to 4 Devices per Module
- Assigned 512MBit per Device (Xilinx : All Virtex-6 / Virtex-7, Altera : All Stratix IV / V)
- Using Slave SelectMAP(x8) Method or FPP(x8) Method.
- Including BIT or RBF loading / Read-back function
- Just Need USB Cable for fusing (USB 2.0 HighSpeed)
- Faster loading time : < 1sec@384MBit
- Faster fusing time : 2sec~1min. ex) LTE UE image fusing time 40sec
- Input Power : 3.3V / 500mA / 1.65W
- Reference I/O Power : 1.8V, 2.5V, 3.3V
- Module Size : 40mm x 60mm
- With 2x30pin, 1.27mm Header

Performance Comparison

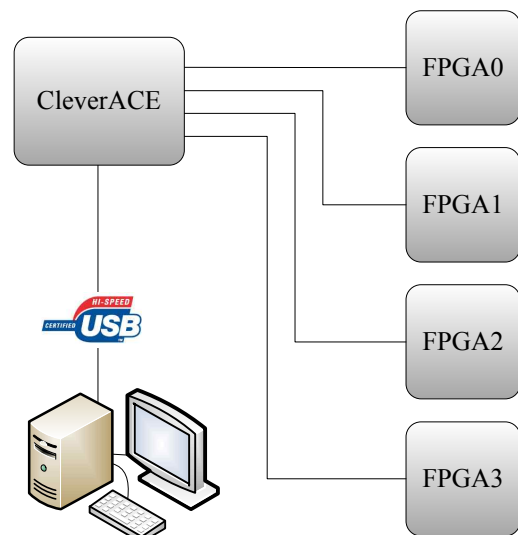
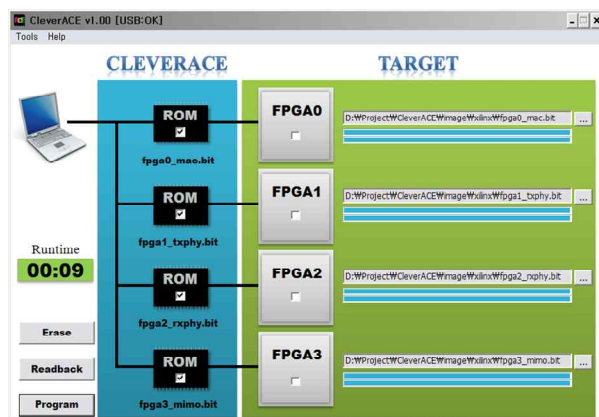


Xilinx VS CleverACE



Altera VS CleverACE

System Diagram



Cleverlogic

대전광역시 유성구 엑스포로 131 TJB 별관 6층
 Annex 6th Floor, TJB Broadcast, 131,
 Expo-ro, Yuseong-gu, Daejeon, Korea, 305-340
 TEL(main) +82 42-710-8777 (direct)+82 70 7542 8336, FAX +82 42-710-9777

